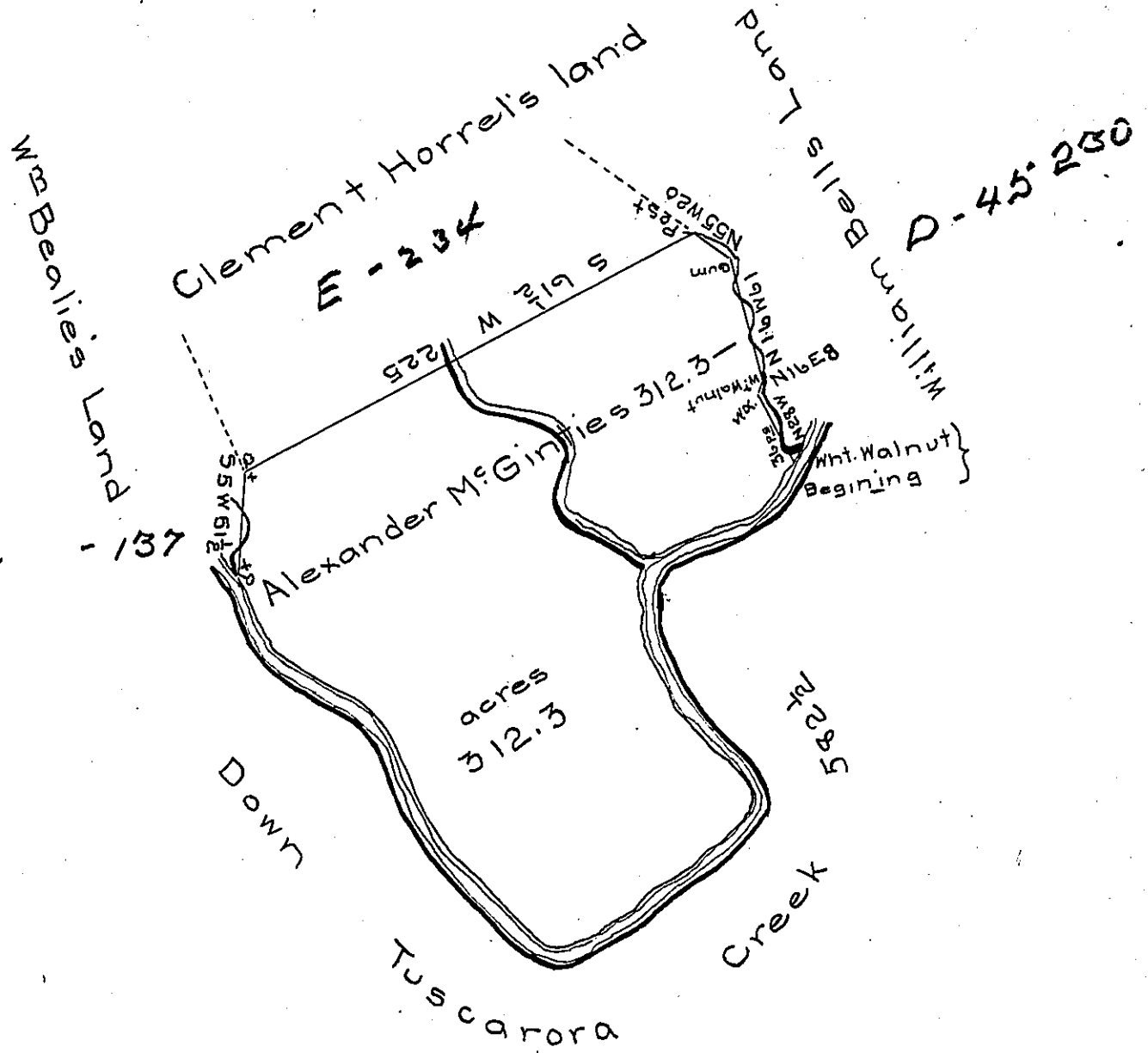


The Several Courses down the Creek

Course <sup>s</sup>	Perch <sup>s</sup>
S 35 E	45
S 60 E	40
S 35 E	85
S 46 E	67
N 55 E	120
N 14 W	17
N 48 W	44
N 16 W	66
N 30 E	16
N 67 E	59
N 31 E	25½

(-167)

In all 582½ perches



The draught of a tract of land called — situate in Tuscarora Valley in the County of Cumberland containing three hundred and twelve acres and fifty perches with the usual allowance of six ac<sup>rs</sup> per cent for roads &c<sup>a</sup> resurveyed the 18<sup>th</sup> of October A.D. 1770 (agreeable to the lines of a former survey made by Coln<sup>l</sup> John Armstrong) in Pursuance of a warrant to Alex<sup>r</sup> Mc Ginty bearing date at Philadelphia the 3<sup>rd</sup> of February A.D. 1755.

To John Lukens Esq<sup>r</sup> Surr<sup>r</sup> Gen<sup>r</sup>! } of the Province of Pennsylvania }  
 } W<sup>m</sup> Maclay D.S.

IN TESTIMONY that the above is a copy of the original remaining on file in the Department of Internal Affairs of Pennsylvania, made conformably to an Act of Assembly approved the 16th day of February, 1833, I have hereunto set my Hand and caused the Seal of said Department to be affixed at Harrisburg, this nineteenth day of March 1906

*James B. Smith*  
 Secretary of Internal Affairs.